



Chromol STAINLESS STEEL MAINTENANCE

Chromol maintains and protects stainless steel surfaces and leaves a glossy protective film that prevents re-soiling. It gently removes finger prints, water spots and other slightly adhering marks. Water droplets easily roll off and the product prevents re-marking.

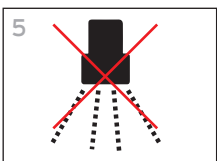
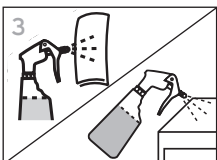
Chromol is easy and economic to use and has a pleasant fragrance.

Application area: For stainless steel maintenance of e.g. cupboards and shelves, walls, elevators, outer paneling of dishwashers and fridges, cookers, cooker hoods.

- **Clean** - Protects stainless steel surfaces from water droplets, soil and finger prints.
- **Safe** - A special oil combination forms an uniform protective film on the surface that prevents re-soiling.
- **Efficient** - Treated surfaces can be cleaned easily and gently.



USE INSTRUCTIONS



- 1 Check hygiene plan, product label and safety information for detailed use information.
- 2 Before using **Chromol**, clean the surface with an all-purpose cleaner.
- 3 Apply **Chromol** undiluted and sparingly on a soft cloth or spray directly onto dry surface.
- 4 Wipe with a lint-free cloth. On brushed surfaces such as extractor hoods, dishwashing machines, elevators etc., rub in direction of the grain.
- 5 No rinse required.

SPECIAL NOTES / INFORMATION

For professional use only!

Safety Data Sheet for professional users available on request.

SAFETY INFORMATION

Do not use on hot surfaces and direct food contact surfaces.

For further information and safety instructions, see product label and safety data sheet.

STORAGE CONDITIONS

Recommended storage temperature between 0 °C and 40 °C.

pH (conc.): 7

PACK SIZE

12 x 500 ml